



## Test mixtures

### ★ Key features

- Test mixtures for GC capillary columns to control the performance of fused silica capillary columns and the GC system

## Ordering information

### Test mixtures\*

Designation		Pack of	REF
Activity test mixture (FA-TMS test according to Donike) in MSTFA/ <i>n</i> -hexane (1 + 4)	1 mg/mL each of TMS capric acid (C10), TMS myristic acid (C14), TMS stearic acid (C18), TMS behenic acid (C22), hexadecane (C16), eicosane (C20), tetracosane (C24), octacosane (C28)	1 mL	722307
Grob test mixture (modified) in <i>n</i> -hexane	(in mg/mL) <i>n</i> -decane (~ 2.8), <i>n</i> -undecane (~ 2.9), <i>n</i> -octanol (~ 3.6), 2,6-dimethylphenol (~ 3.2), 2,6-dimethylaniline (~ 3.2), methyl decanoate (~ 4.2), dicyclohexylamine (~ 3.1), methyl undecanoate (~ 4.2), methyl dodecanoate (~ 4.1)	1 mL	722310
MN OPTIMA® test mixture in pentane	0.1 % each of undecane, dodecane, octanol, dimethylaniline, decylamine, methyl decanoate, methyl undecanoate, heneicosane, docosane, tricosane (chromatograms see page 305)	1 mL	722316
MN OPTIMA® amine test mixture in ethanol	0.2 % diisobutylamine, 1 % diethanolamine, 0.2 % 2,6-dimethylaniline, 0.2 % <i>o</i> -propyl-pyridine, 0.2 % dicyclohexylamine, 0.2 % dibenzylamine	1 mL	722317
FAME test mixture in hexane	0.1 % each of FAMEs C4, C6, C8, C10, C12, C14, C16, C18, C18:1 cis, C18:1 trans, C18:2, C18:3, C20, C22, C22:1, C24 (chromatogram see page 334)	1 mL	722320

\* These products contain harmful substances which must be specially labeled as hazardous. For detailed information please see SDS.

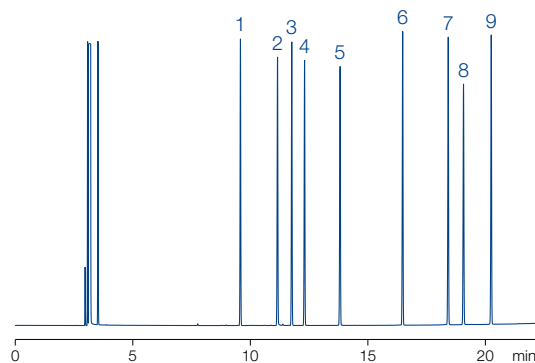
### Grob test mixture (modified) (REF 722310)

MN Appl. No. 211250

Column: OPTIMA® 5, 50 m x 0.25 mm ID, 1.0 µm film  
Injection: 1 µL, split 1:40, 280 °C  
Carrier gas: 1.5 bar H<sub>2</sub>  
Temperature: 80 °C → 280 °C (10 min), 8 °C/min  
Detector: FID 280 °C

#### Peaks:

1. *n*-Decane
2. 1-Octanol
3. *n*-Undecane
4. 2,6-Dimethylphenol
5. 2,6-Dimethylaniline
6. Methyl decanoate
7. Methyl undecanoate
8. Dicyclohexylamine
9. Methyl dodecanoate





# Test mixtures for GC capillary columns

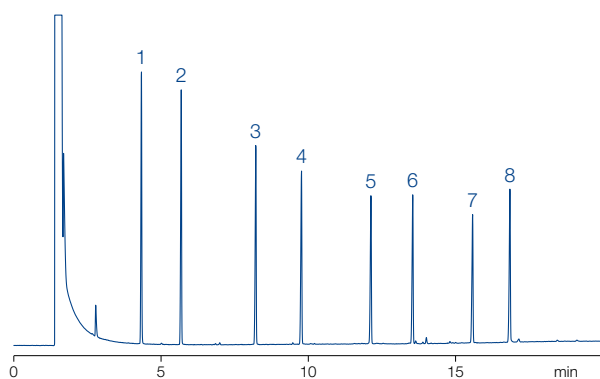
## Activity test mixture (REF 722307)

MN Appl. No. 211240

Column: OPTIMA® 5, 25 m x 0.32 mm ID, 1.0 µm film  
Injection: 1 µL, split 1:40, 300 °C  
Carrier gas: 0.6 bar H<sub>2</sub>  
Temperature: 150 °C → 300 °C (8 min), 10 °C/min  
Detector: FID 300 °C

### Peaks:

1. TMS capric acid (C<sub>10</sub>)
2. Hexadecane (C<sub>16</sub>)
3. TMS myristic acid (C<sub>14</sub>)
4. Eicosane (C<sub>20</sub>)
5. TMS stearic acid (C<sub>18</sub>)
6. Tetracosane (C<sub>24</sub>)
7. TMS behenic acid (C<sub>22</sub>)
8. Octacosane (C<sub>28</sub>)



## OPTIMA® Amine test mixture (REF 722317)

MN Appl. No. 250020

Column: OPTIMA® 5 Amine, 30 m x 0.32 mm ID, 1.5 µm film  
Injection: 1 µL, split 1:40  
Carrier gas: 0.6 bar H<sub>2</sub>  
Temperature: 100 °C → 280 °C, 10 °C/min  
Detector: FID 280 °C

### Peaks:

1. Diisobutylamine
2. Diethanolamine
3. 2,6-Dimethylaniline
4. o-Propanol-pyridine
5. Dicyclohexylamine
6. Dibenzylamine

